

Maraetōtara Tree Trust

www.Maraetotaratreetrust.co.nz

2023

ANNUAL UPDATE



Richard Stone
MTT Chair

It has been another huge year for the Maraetōtara Tree Trust.

We have again managed to fund raise for and plant around 9 000 plants in the 2023 planting season.

We were thrilled to have a further year of support confirmed from Unison as our principal partner.

In addition to this support, Unison's Chief Financial Officer Greg Morgan has agreed to join us as a trustee. Greg was a close friend of our late Chairman Pat Turley and has joined the trust to, in part, carry on the great work that Pat did during his lifetime.

We were fortunate that the river was not severely affected by Cyclone Gabrielle. We had some losses of trees, particularly those that were planted in 2022. However, many of the older trees survived the flooding well.

The removal of Willows from the river ensured that there was less debris on the river which could damage bridges. The amount of debris flowing out to sea following the cyclone was in stark contrast to many of the other rivers in Hawke's Bay.

This year is our 21st year since the trust was formed. The hard work of the early trustees is certainly paying dividends now as we work towards our goal of planting all the accessible banks of the river.

We calculate we have around 25 kilometres left to plant. At our current rate of planting we expect to take a further 12-13 years to complete our plan. However, if further funding becomes available, we have the ability to increase plantings through the hard work of our contractors.

We continue to run a very efficient trust. The vast majority of all donations go directly into plants in the ground.

I encourage you to consider making a donation to the trust to support its ongoing work and re-establish the awa as a sanctuary for biodiversity in the Hawke's Bay.

Richard Stone
Chairman Maraetōtara Tree Trust

**Ko au te awa. Ko te awa
ko au. I am the river. The river is me.**

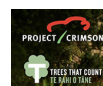
PRINCIPAL
PARTNER |



unison

**david
trubridge**

**HAWKE'S BAY
REGIONAL COUNCIL**
TE KAHUNHERA-A-ROHĀ O TE MATAU-A-MĀUI



watertesting
HAWKE'S BAY

**CLEARVIEW
ESTATE**
CELLAR DOOR | WINERY | RESTAURANT
Te Awahiri | Hawke's Bay | Aotearoa

Celebrating 21 Years Maraetōtara Tree Trust

MĀ TŌU ROU MĀ TAKU ROU
KA ORA RA TE IWI ME TE AWA.

There is nothing like a 21st birthday party. It used to be called a "coming of age". Our Trust has planted an average of 7,500 trees a year. The total is well over 150,000 trees. Many people have contributed to this work over these 2 decades: landowners, trustees, and schools. Thank you all for your dedication to the river. Unison staff are coming out on the 24th November to tend to our plants with some releasing. This is clearing weeds from the roots of plants.

John Scott was a founding trustee as were Sir Rodney Gallen and Raewyn Ricketts. Keith Taylor became a Trustee in 2012. Jenifer Jane edited our newsletter and was secretary. Cynthia Bowers was a founding trustee and treasurer. Alan Berry is our current treasurer and has done wonderful work managing our plantings. This role is now being done by Willie Murphy of Pollen Workshop. Martin A'Court was a founding trustee and Folker Liebenow was a long serving trustee. Tony Wilson was also a trustee.

Paratene Piki Ahu Te Huia was a founding trustee and Kepa Toa is on our present Trust and gives us valuable advice on kawa (protocol), karakia and rongoa maori. Kia ora koe Kepa.

Pat Turley was a trustee until 2022 and our chairperson. His sudden death was a shock to us all as was the passing of Dean Roughton. Both were very hard workers for the Trust. Hylton McDermott was a founding trustee and has been a trustee for all of our 21 years. Dick Geenty was a treasurer for many years. Our web site has a definitive list of past and present trustees

<https://www.Maraetotaratreetrust.co.nz>

Thank you to the landowners on the river. Thank you to our schools who assist with plantings and to Unison who supports us and whose staff have contributed time as well with both planting and care of plants. Greg Morgan of Unison is now a trustee and this is a much valued sponsorship. David Trubridge and Clearview Winery have also been helpful and generous sponsors. We will be meeting at Clearview to honour our 21 years. Many people from our local communities have also dug the ground, planted and weeded. Nga mihi ki a koutou.



Above: This is a photo of our Trustees in 2019. We acknowledge the wonderful work that Pat Turley and Dean Roughton did for MTT. Ma te Atua korua e manaaki. Rest in peace. Photo taken by Richard Stone.

Above Trustees (left to right): Dean Roughton, Hylton McDermott, Alec Olsen, Lisl Prendergast, Josh Lynch, Alan Berry, Kepa Toa, Pat Turley. The photo was taken at David Trubridge's premises. David has been very supportive of the Trust.



Above: The river in flood. A few trees were lost but of all Hawke's Bay's rivers the Maraetōtara was the least damaging to its environs.



Right: No, I did not break the rahui. I am just putting this in to remind you that, according to Hans Rook, the river is a significant hatchery for inanga (whitebait).



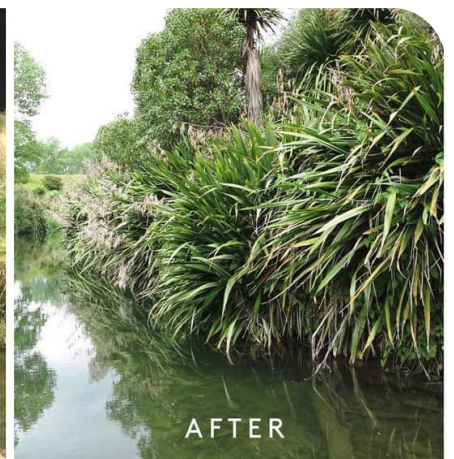
Above: Robin & Wendy Black and Stuart Roper planting a Puriri, which has survived Cyclone Gabrielle. A big thank you to the Brathwaite Trust for all their help. Their contribution makes our work with schools possible. They fund the transport that get our young planters out to the river.



Above: The river taken from the "island". Thank you to all our Te Awanga planters and the children of Mangateretere School. Pai rawa tōu koutou mahi.



BEFORE



AFTER

Above: The plantings have made an aesthetic difference but are also important for water quality and biodiversity.

Mangateretere School

Congratulations to Mangateretere school for its 120th birthday. The Maraetōtara Tree Trust will be gifting some Titoki trees and some Kowhai trees to the school. We are pleased to have this great little school as a partner.

This has been a very wet winter so instead of planting we have kept the education component alive in other ways.

Lisl Prendergast visited the school on 22nd September. Mona Stewart, the Principal of Mangateretere is very supportive of MTT. The students are very eager for more learning of a botanical nature including rongoa maori. Our schedule has been adjusted this year owing to the very wet winter.



Nga Mihi to all our planters over 21 years! Taikura School Hastings have been wonderful supporters. The Corrections Department have also helped us and Mangateretere School.



Above: Mona Stewart, Principal, Mangateretere School. Students are pictured with a kohekohe plant. Students (left to right): Raevyn Nepe, Shaw Nepe, Jahkya-Li Ropiha-Purcell, and Te Ahurangi Rerekura Pehi. The Maraetōtara Tree Trust is very grateful for the assistance of the Nina Brathwaite Trust who have been so supportive of our educational endeavours.



Maraetōtara Tree Trust

PLANTING REPORT 2023

The Maraetōtara came through Cyclone Gabrielle with much less damage than many other Hawke's Bay rivers. Several landowners lost fences bordering the river and some of our plantings were damaged or swept away, but it could have been a great deal worse. Over the past twenty years the Hawke's Bay Regional Council has removed huge numbers of willow trees and logs from the riverbed, and it was this action that saved the fences along the river from being totally obliterated and the adjoining farmland devastated. We already knew that the work of the Council and the Maraetōtara Tree Trust had resulted in the river running faster, deeper and cleaner than it did even ten years ago. Just in time, as it turned out, for despite the huge rainfall in the upper catchment, the river overflowed its natural banks in just a few places, with minimal loss to landowners.

We shall need to re-plant a few areas damaged by the flood and these will be assessed once we see how the plants recover during the coming summer. In the meantime, we have continued with the plantings already planned for the winter of 2023. The Maraetōtara River flows mainly through farmland and is visible from the road in only a few places. This year though, we have been working on a project to establish a small patch of native forest right beside the road, upstream from the Maraetōtara Gorge Reserve. The landowner retired an area from farming, so that we could plant 6,300 native trees and flaxes all the way from the road fence, right across to the other side of the river. In years to come the public will be able to better understand what the Maraetōtara valley looked like, way back in history.

MTT Governance Group

Chair: Richard Stone

Treasurer: Alan Berry | **Secretary:** Alec Olsen (Trustee)

Trustees: Hylton McDermott, Lisl Prendergast, Kepa Toa, Mark Roper, Josh Lynch, Greg Morgan | **HBRC Representative:** Alice Anderson

Financial Advisor: Alan Berry | **Trust Settlor:** Andy Lowe

Maraetotara
Tree Trust  An Investment in the Future Since 2002

MTT Supporters & Donors

PRINCIPAL PARTNER
Unison Networks Ltd.

PROJECT PARTNERS
Participating Landowners 2002-23
Hawke's Bay Regional Council 2002-23
Habitat Biodiversity & Pest Management Ltd.

PRIMARY FINANCIAL DONORS
David Trubridge Ltd
Project Crimson - Trees that Count

Biodiversity Hawke's Bay
Clearview Estate Winery
Nina EJ Brathwaite Trust

GIFTED SERVICES
MTT Trustees & Officers
Souness Stone Lawyers
David Trubridge Ltd
The Print House - Havelock North
Pollen Workshop, Te Awanga
Water Testing Hawke's Bay

In addition, we also planted 3,300 natives further downstream, bring the total plantings for the year to 9,600.

Our trust's programme has a number of objectives. With the Regional Council's help in removing the willows and other debris from the riverbed, we have already shown that we can protect adjoining farmland from flooding. But our primary objective has always been to enhance the biodiversity within the river and restore it to the tree-lined valley it used to be. Our plantings of native grasses, flaxes and

we are spending \$70,000 a year on the direct cost of buying trees and putting them in the ground. None of this would be possible, without the support of these friends of the trust.

The restoration of the Maraetōtara River is a truly huge undertaking. We have planted about 155,000 native trees along the riverbank since we began this work in 2003, but still have another 110,000 to go, before the job will be seen as complete. The community are on our side though and we



Trustee Hylton McDermott and HB Regional Council Catchment Advisor Alice Anderson on the banks of the river east of Kahuranaki Station



Above Left: Some lost, but many saved. Above Right: Some areas of our plantings were totally unscathed. Below Right: This winter's young trees, three months after planting.

tree species serve to filter out the nutrients that would otherwise enter the water, allowing the water creatures to thrive again. And the forty kilometre native tree corridor that we are creating is encouraging the passage of our native birds from the Cape Sanctuary to the bush remnants at the head of the valley. It is a big job, but with the help of the community and our many sponsors and supporters, we are getting there.



Trees that Count, part of Project Crimson, assisted us this year by covering the cost of 5,000 native tree plants from public contributions. Biodiversity Hawke's Bay again helped us with our river restoration work, as did our Principal Partner Unison Networks, David Trubridge Limited, Clearview Winery, Clean Planet and the Nina EJ Brathwaite Trust. Our overhead costs are minimal but

are confident that we will again see the entire river flanked by native trees, the creatures returned to the water of the river, and the birds at home in a forest corridor along its banks.

Thank you for your support.

Alan Berry
Treasurer & Project Planner



Riverbanks awaiting planting, upstream from the Maraetōtara Gorge Reserve

Please help the trust plant more trees:

The restoration of the Maraetōtara River corridor is dependent on support from our community. Please donate so we can continue improving the water quality and this beautiful habitat.

Go to Give-a-Little or use this slip.

I WOULD LIKE TO DONATE:

- ☐ \$50
☐ \$100
☐ \$300
☐ Other: \$.....



More about us and Give-a-Little:

www.Maraetotaratreetrust.co.nz

<https://givealittle.co.nz/org/Maraetotara-tree-trust>

@Maraetotaratreetrust @Maraetotaratreetrust
Maraetotara-tree-trust/

Maraetotara Tree Trust  An Investment in the Future Since 2002